





FREE STOP SOFT-CLOSE LIFT-UP DOOR SYSTEM

TCH-311011 023.S



Features

- Free-stop functionality
- Soft-close technology with adjustable damping
- Adjustable opening angle between 85° - 100°
- Opening and closing force adjustment
- 3d adjustment capability
- No hinges required
- Compact, space-saving design
- Compatible cabinet dimensions
 - Height: (12" - 32") 300 mm - 800 mm
 - Front weight: (2.9 lb - 44.0 lb) 1.3 kg - 20.0 kg
 - Minimum cabinet depth: 260 mm
- Sold as a set

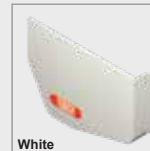
Color options



Dark Gray



Light Gray



White

Usage Recommendations

Model	Selection According to the LF		Weight-Based Selection		
	Cabinet Height- KH (mm)	LF	Cabinet Height-KH (mm)	Min. Weight (kg)	Max. Weight (kg)
TCH-311011 023.S.L	(12" - 20") 300 mm - 500 mm	660-1800	300	2.2	6.0
			350	1.9	5.1
			400	1.7	4.5
			450	1.5	4.0
			500	1.3	3.6
TCH-311011 023.S.M	(12" - 24") 300 mm - 600 mm	1100-2900	300	3.7	9.6
			350	3.2	8.2
			400	2.8	7.2
			450	2.5	6.4
			500	2.2	5.8
			550	2.0	5.2
			600	1.8	4.8
TCH-311011 023.S.H	(14" - 28") 350 mm - 700 mm	1840-5200	350	5.3	14.8
			400	4.6	13.0
			450	4.0	11.5
			500	3.7	10.4
			550	3.4	9.4
			600	3.0	8.6
			650	2.8	8.0
TCH-311011 023.S.HD	(18" - 32") 450 mm - 800 mm	4000-9000	700	2.6	7.4
			450	8.9	20.0
			500	8.0	18.0
		4000-8400	550	7.2	16.3
			600	6.7	15.0
			650	6.1	13.6
			700	5.7	12.0
			800	5.0	10.5

Lift Force (LF) Formula:

- $LF = KH \text{ (mm)} \times [\text{Door Weight} + (\text{Handle Weight} \times 2)]$

Model Selection Criteria:

- If the LF value falls within an overlapping range, always choose the larger model to ensure optimal performance and longevity.
- If the LF is outside the standard range, a customized lift system is recommended to meet your cabinet's specific requirements.

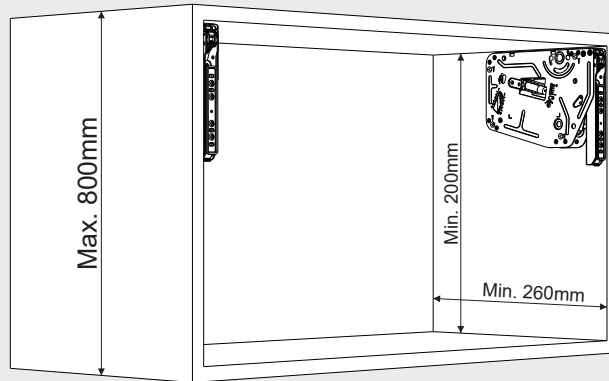
Key Definitions:

- KH = Cabinet Height (in millimeters) FW = Front Weight (in kilograms) LF = Lift Force (calculated in Newton-millimeters or kg-mm for model reference)

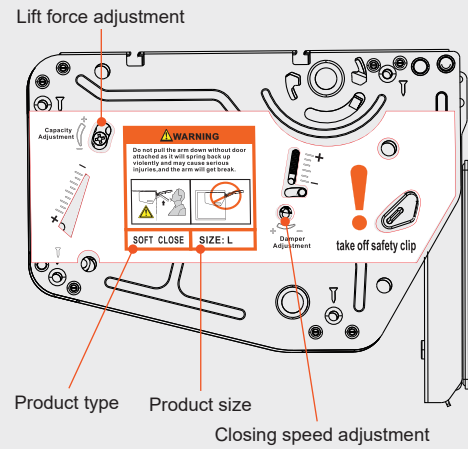


General Informations

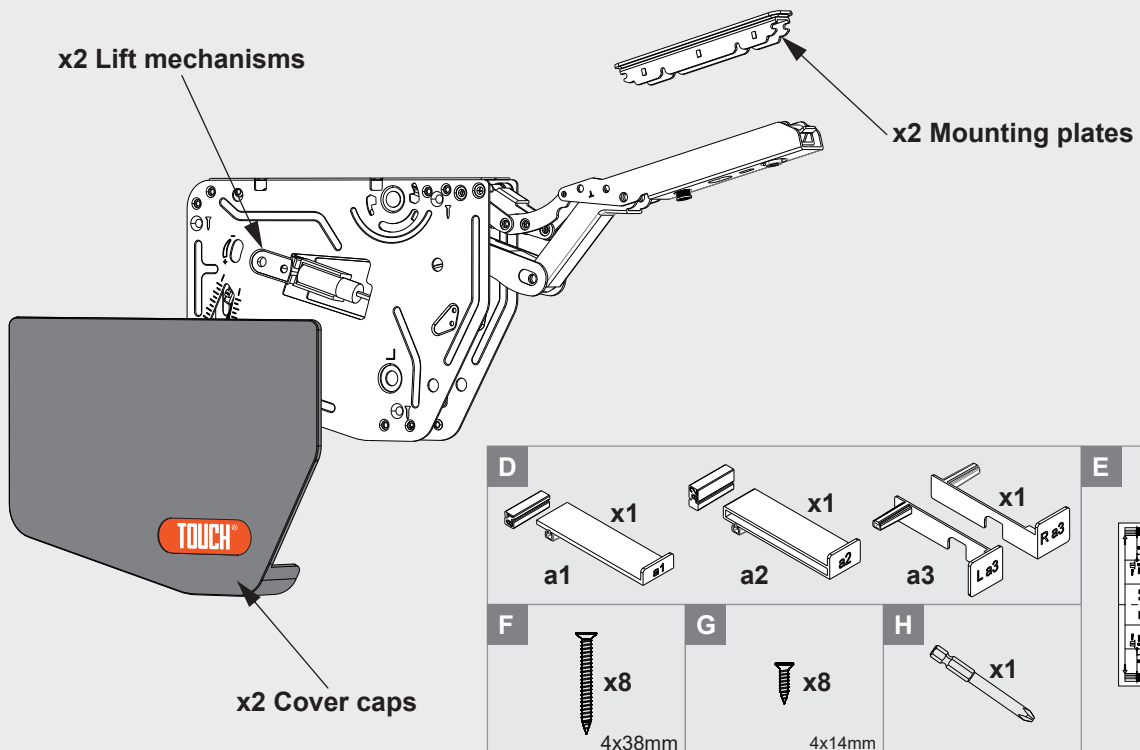
Cabinet Specification



Adjustment & Label Guide

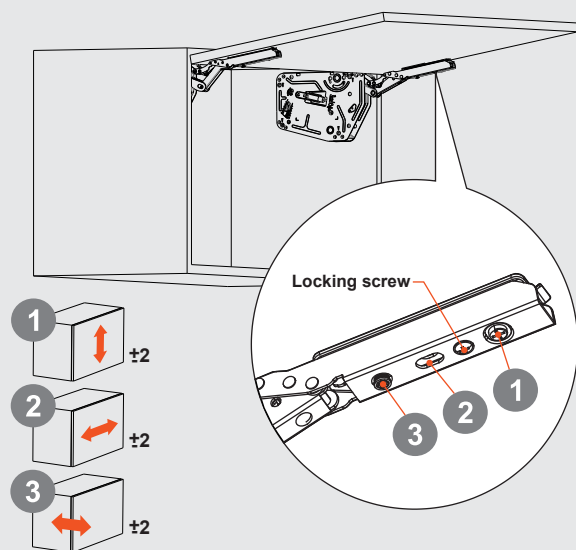


Included Components

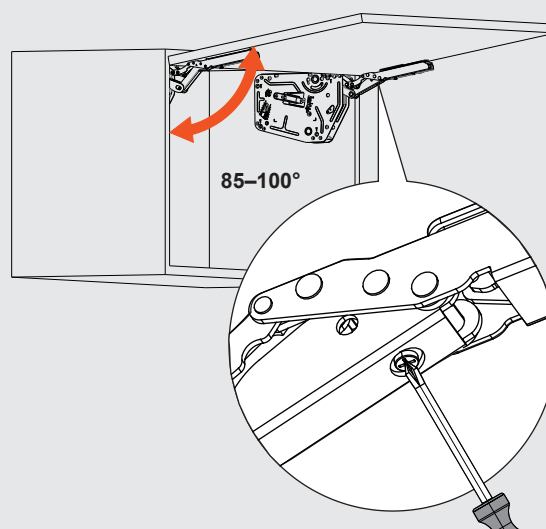


Adjustments Points

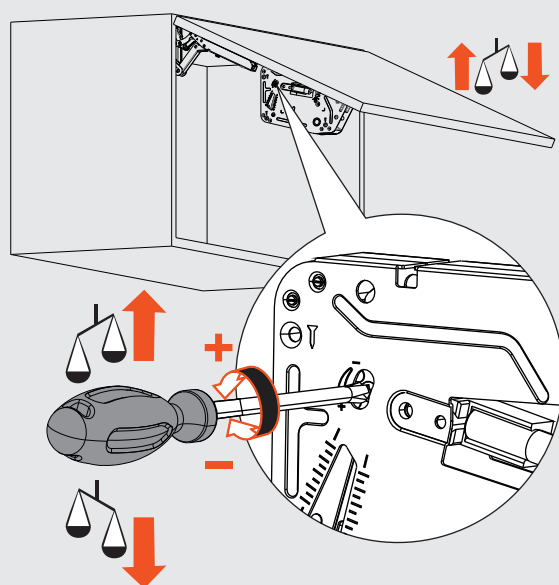
Front Panel Alignment Adjustment



Adjusting door opening range



Lift mechanism force adjustment



Closing speed adjustment

