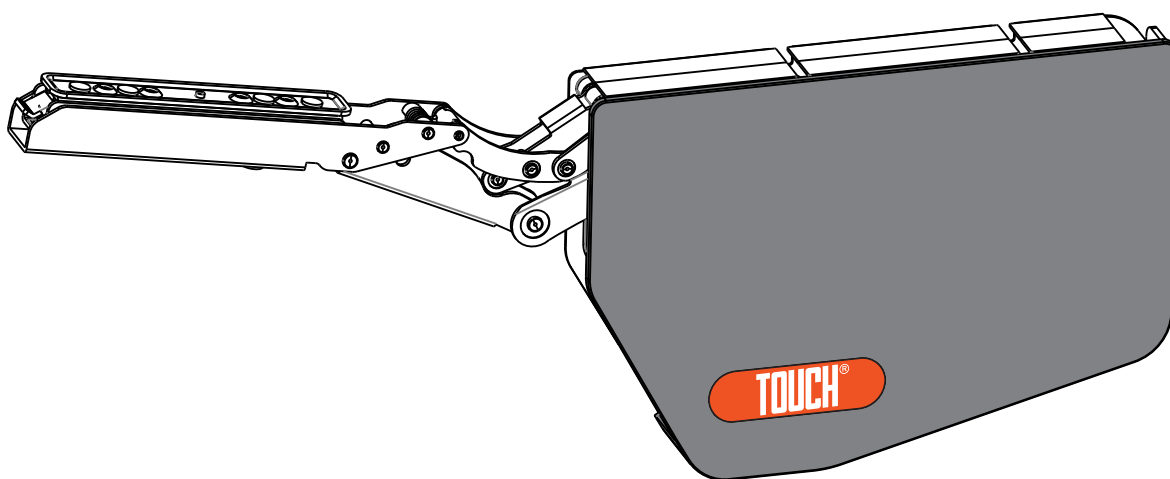




TCH-311011 023.S

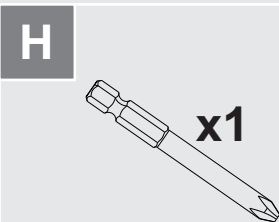
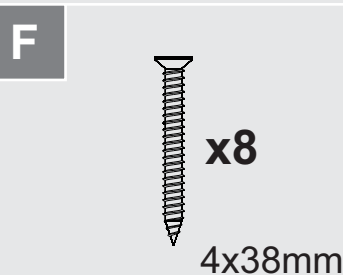
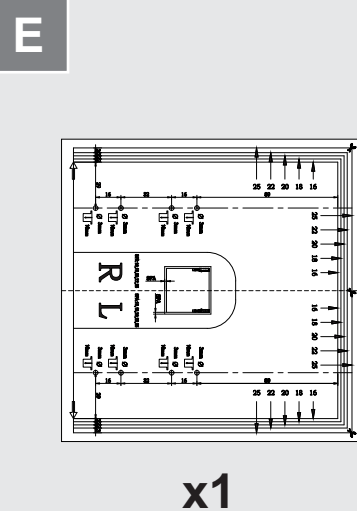
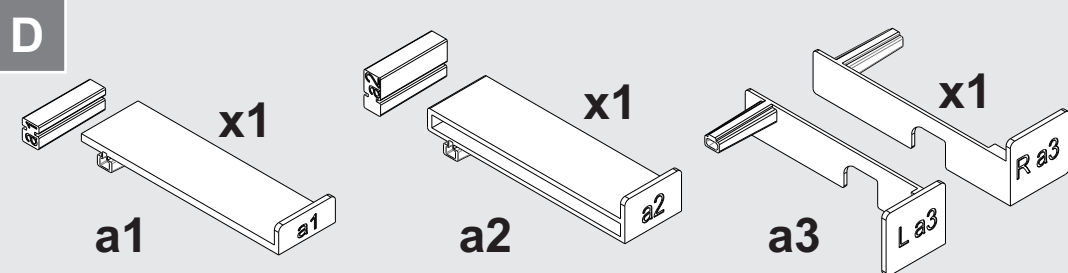
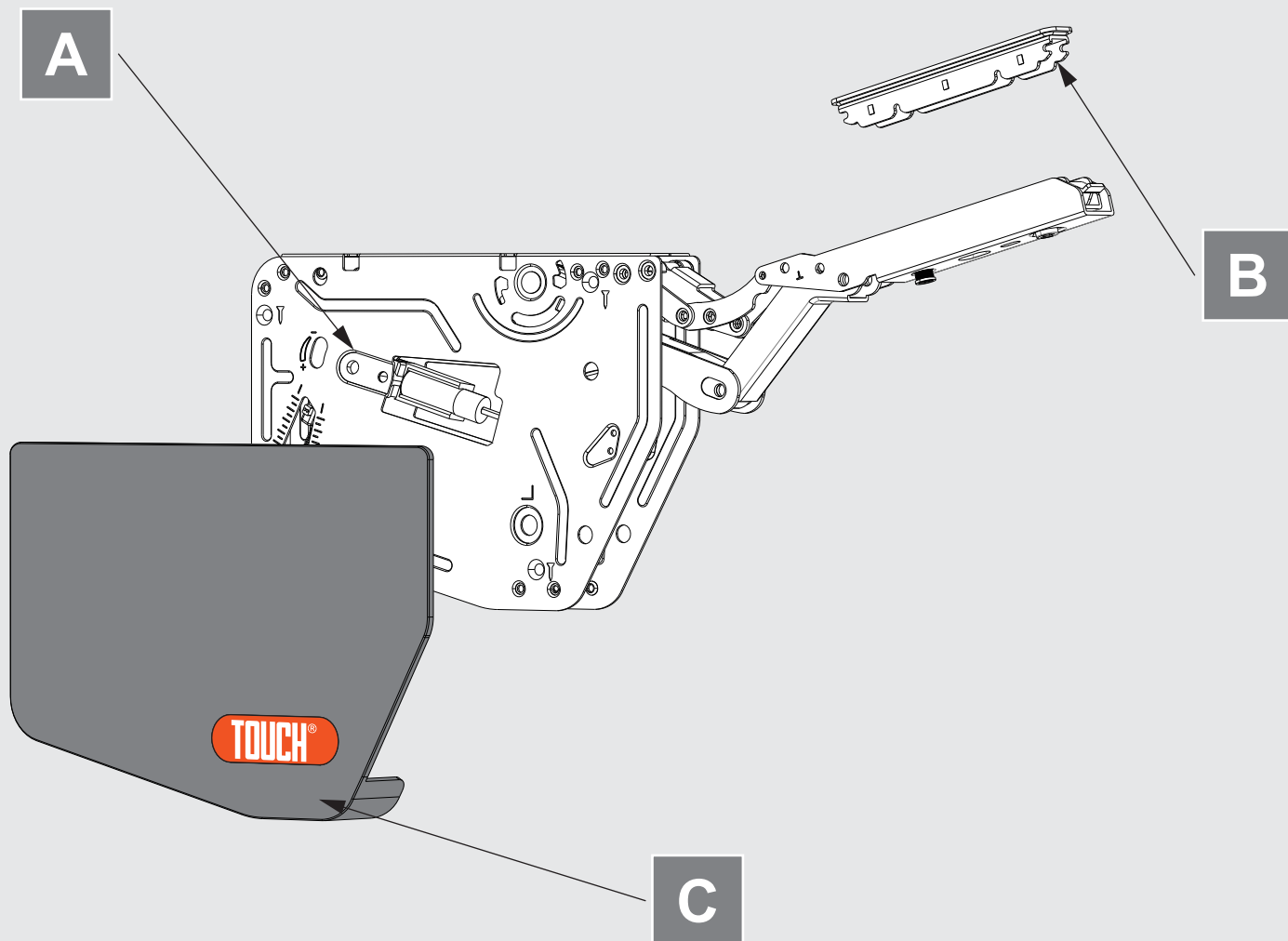
FREE STOP SOFT-CLOSE LIFT-UP DOOR SYSTEM





TCH-311011 023.S INSTALLATION INSTRUCTIONS

Included Components

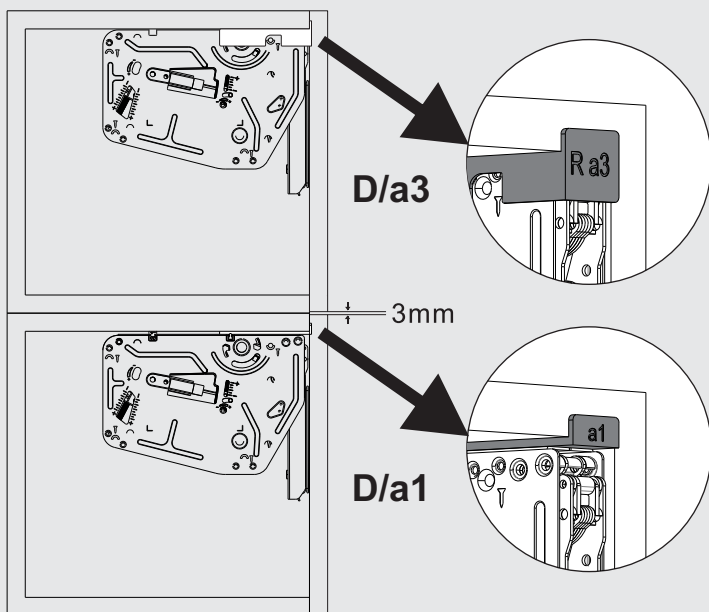




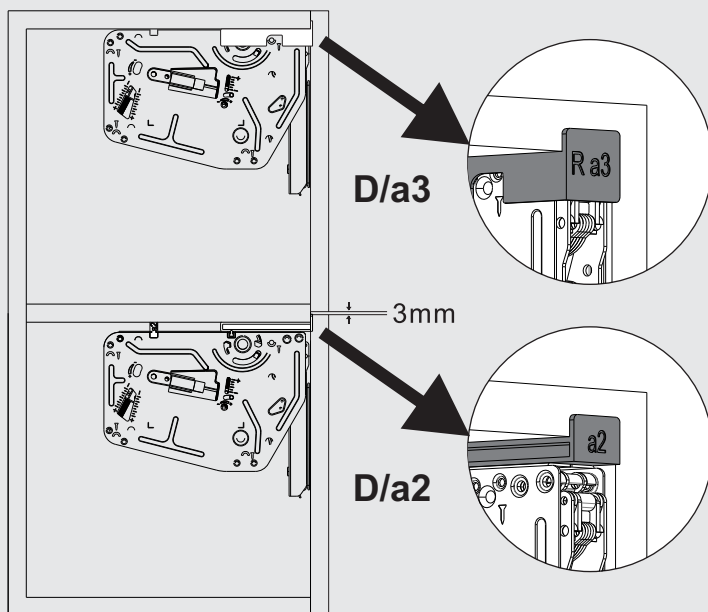
TCH-311011 023.S INSTALLATION INSTRUCTIONS

Applications

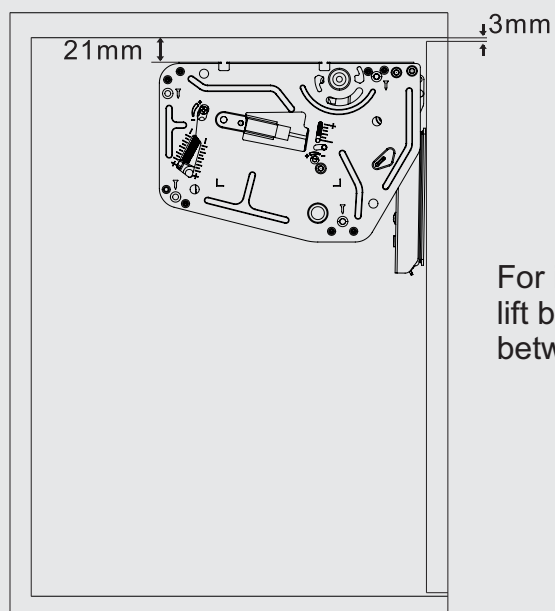
Stacked cabinets



Cabinet with a partition



Inset application



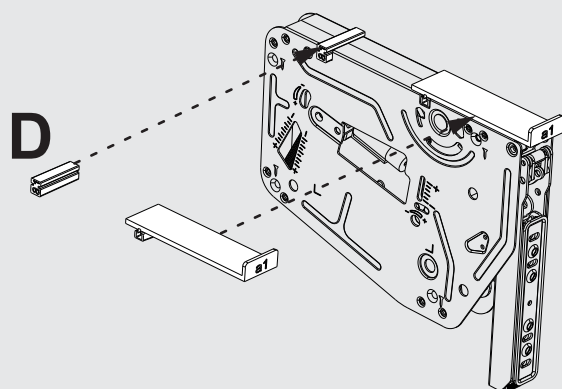
For inset applications, lower the lift by 21 mm to avoid interference between the door and the cabinet.



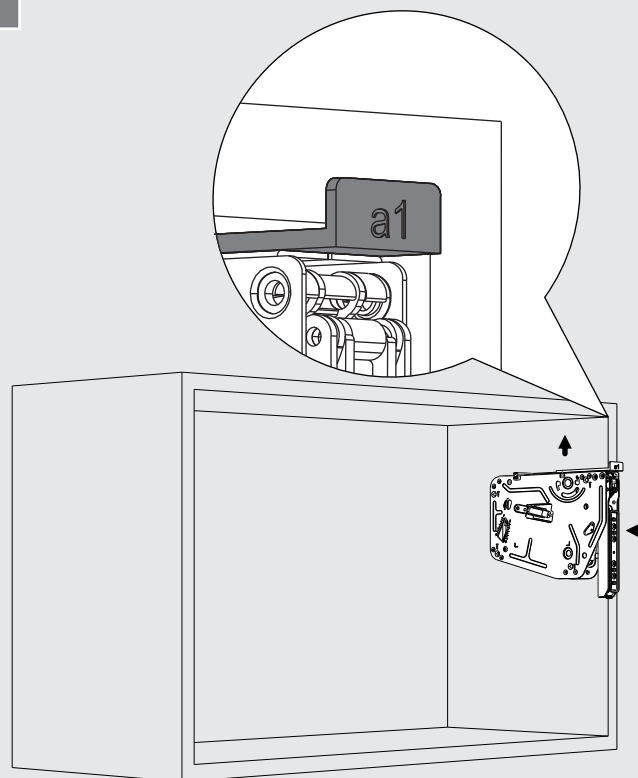
TCH-311011 023.S INSTALLATION INSTRUCTIONS

Installation Guide

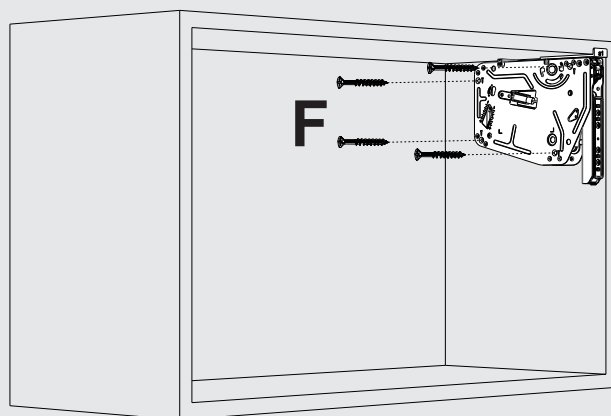
1



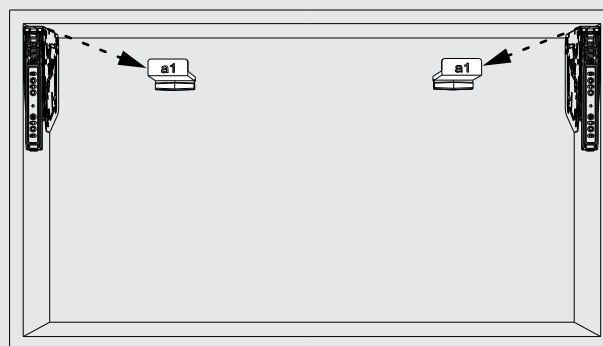
2



3



4

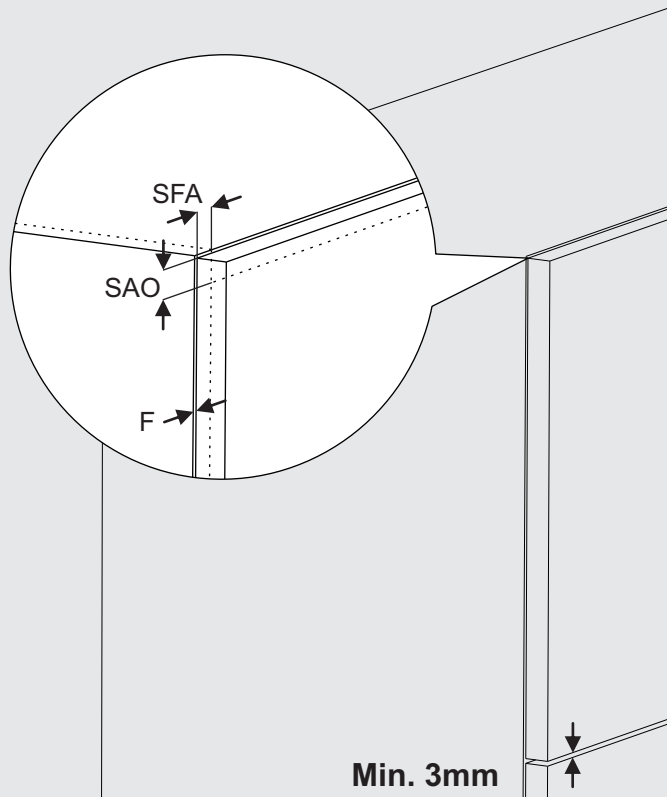




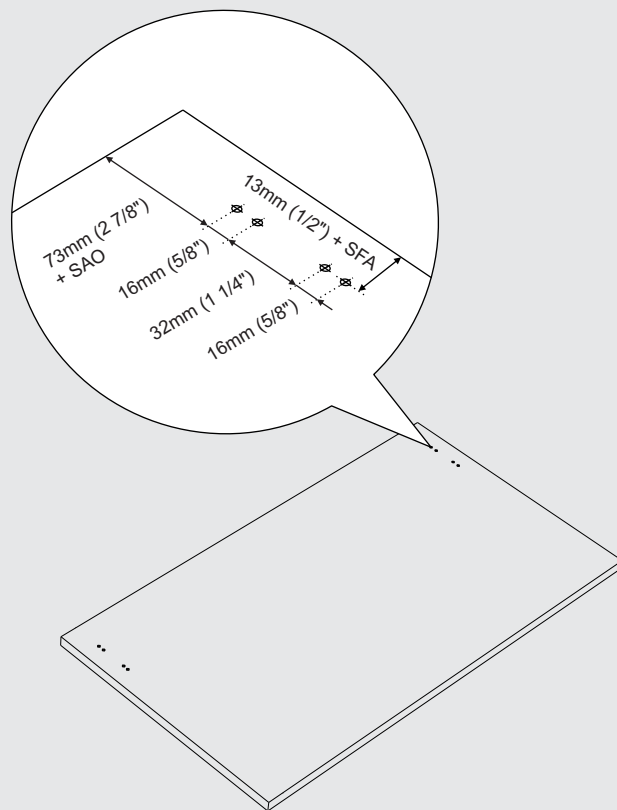
TCH-311011 023.S INSTALLATION INSTRUCTIONS

Installation Guide

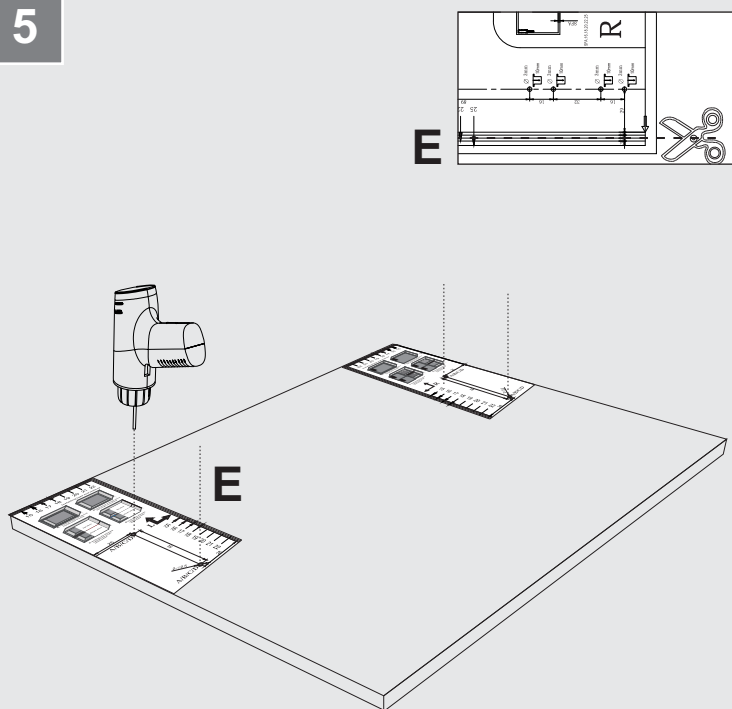
i



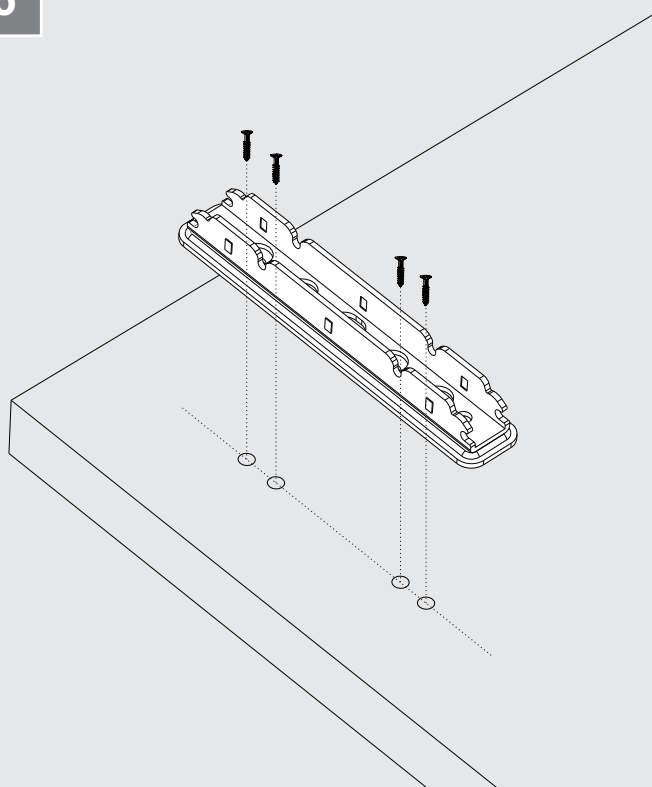
i



5



6

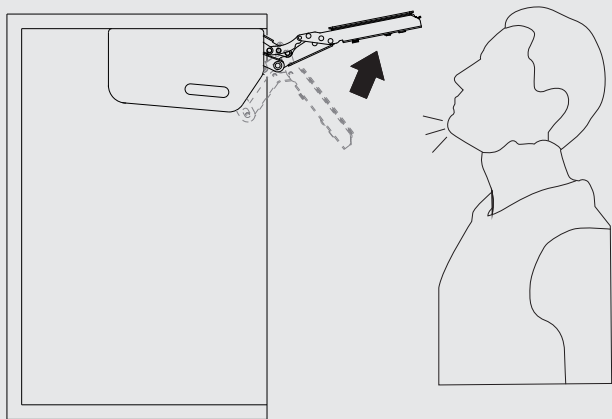




TCH-311011 023.S
INSTALLATION INSTRUCTIONS

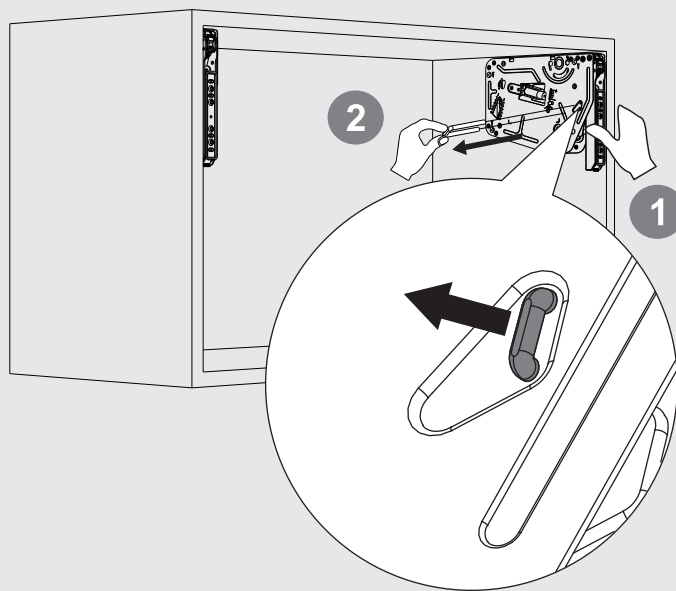
Installation Guide

! WARNING

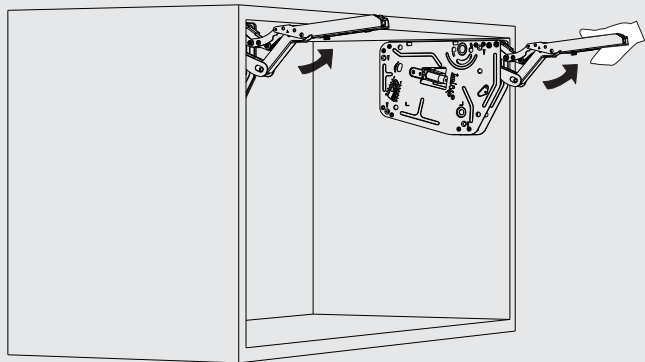


Use care when pulling out the lever. The lever may spring upward unexpectedly, potentially causing injury or damaging the lift system.!

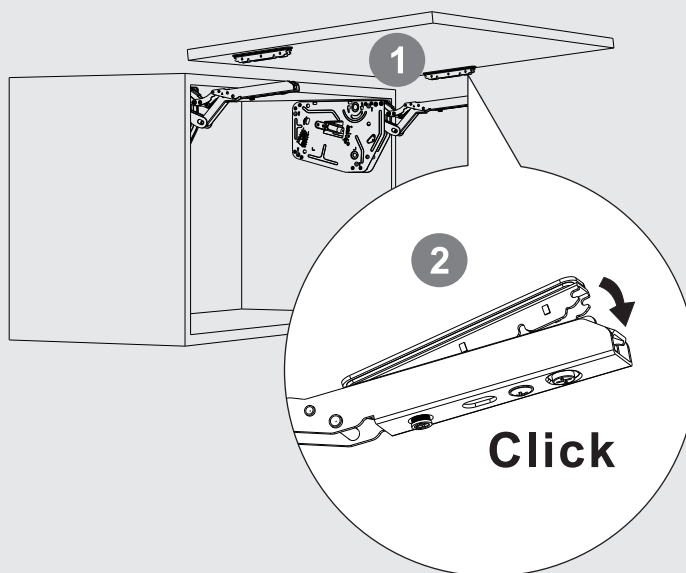
7



8



9



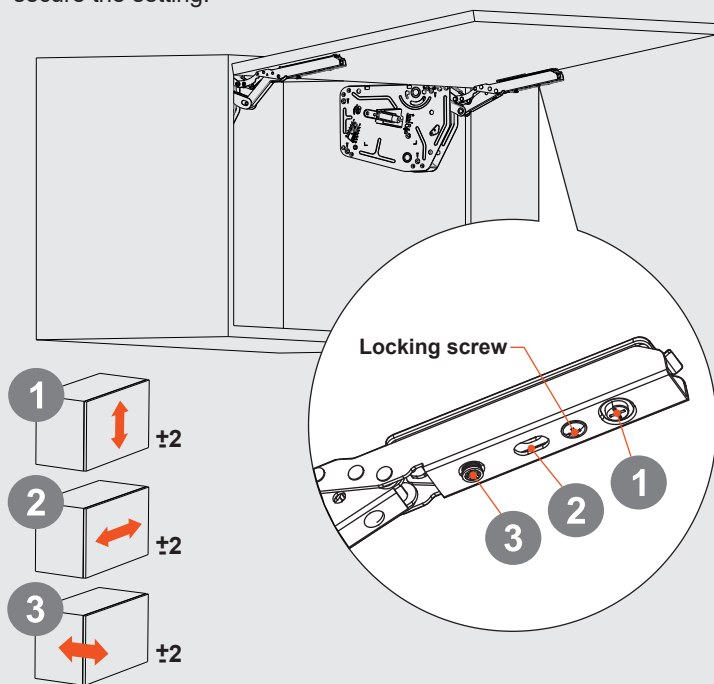


TCH-311011 023.S INSTALLATION INSTRUCTIONS

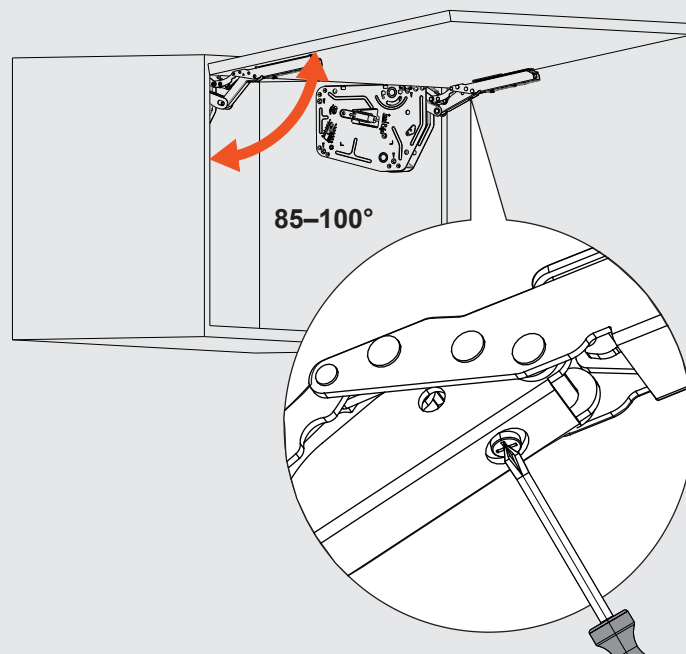
Adjustment Instructions

Front Panel Alignment Adjustment.

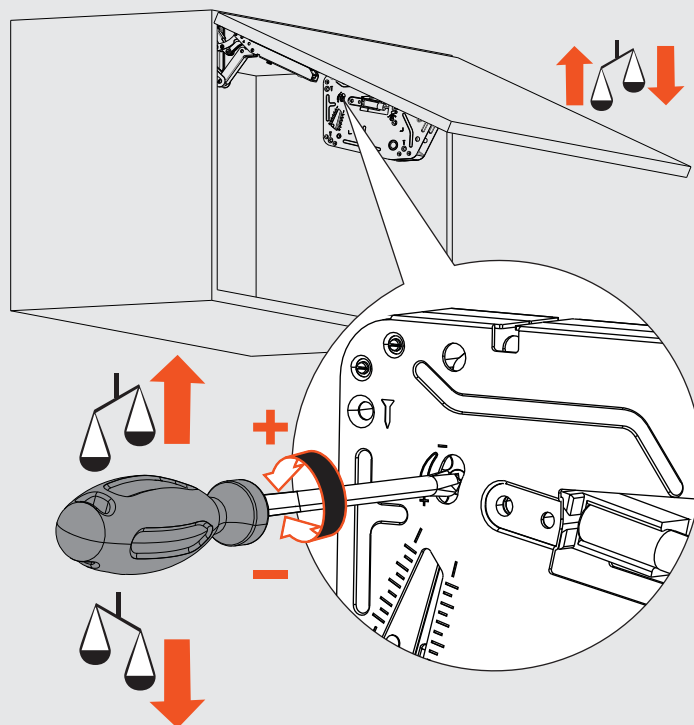
Note: Loosen the locking screw before making any adjustments. Once the adjustment is complete, re-tighten the screw to secure the setting.



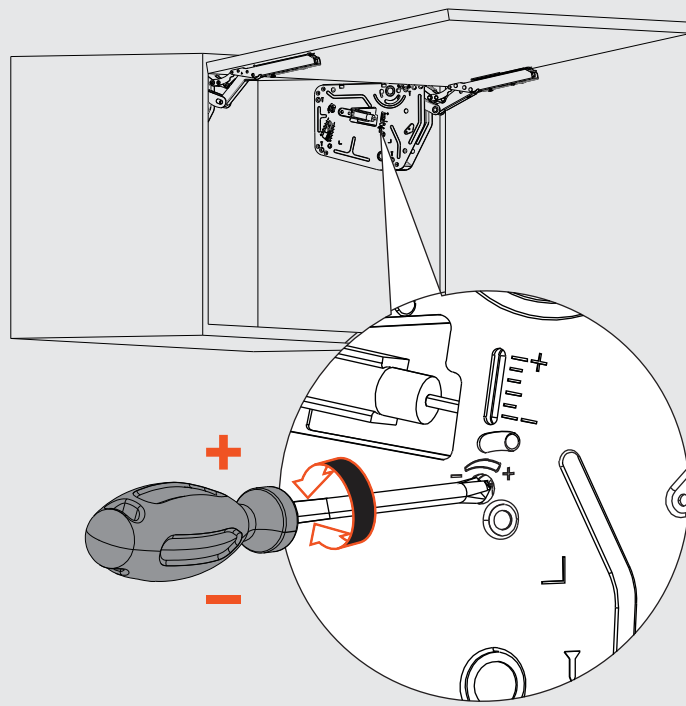
Adjusting door opening range.



Lift mechanism force adjustment.



Closing speed adjustment.





TCH-311011 023.S INSTALLATION INSTRUCTIONS

End Cap Installation

10

