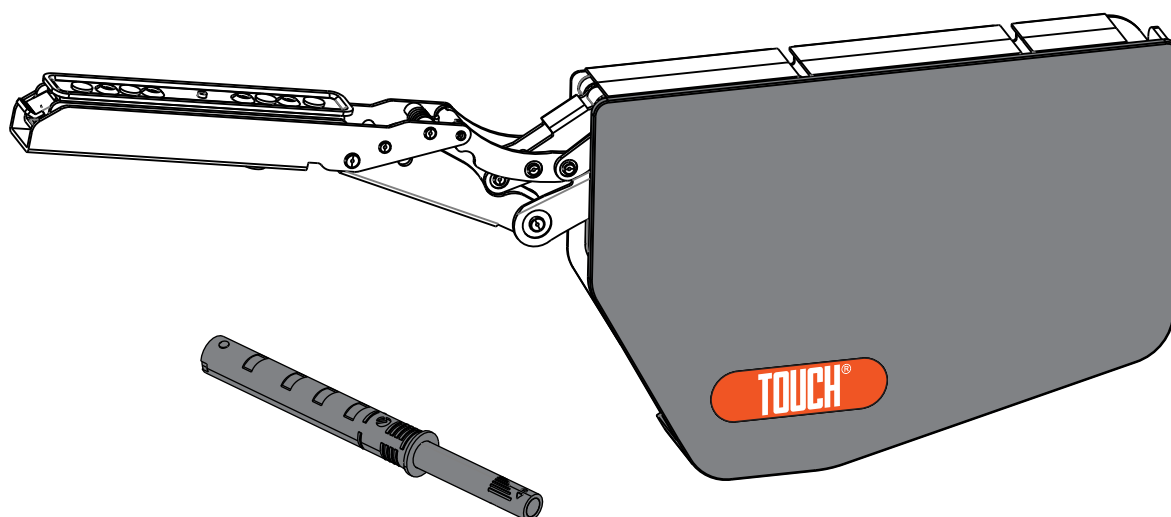




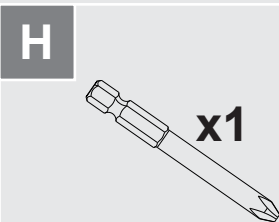
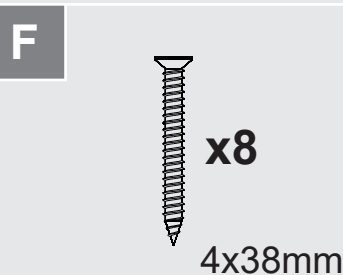
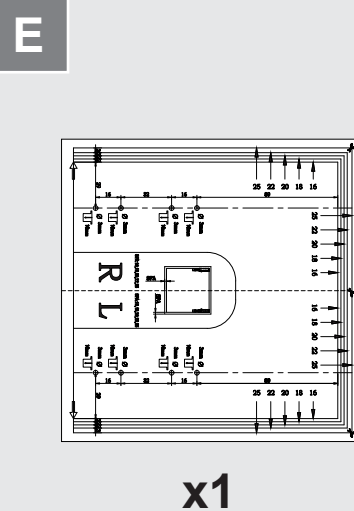
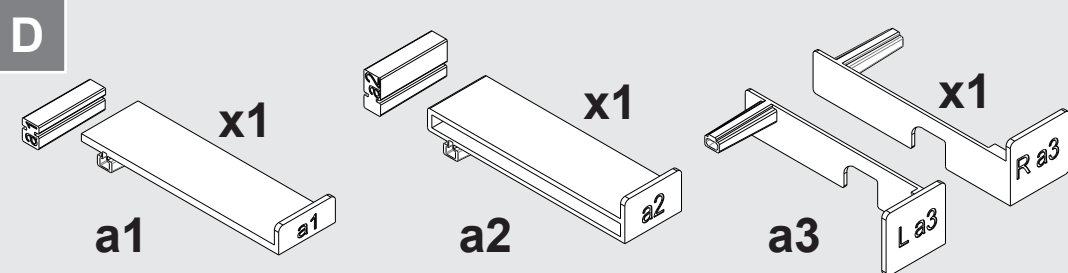
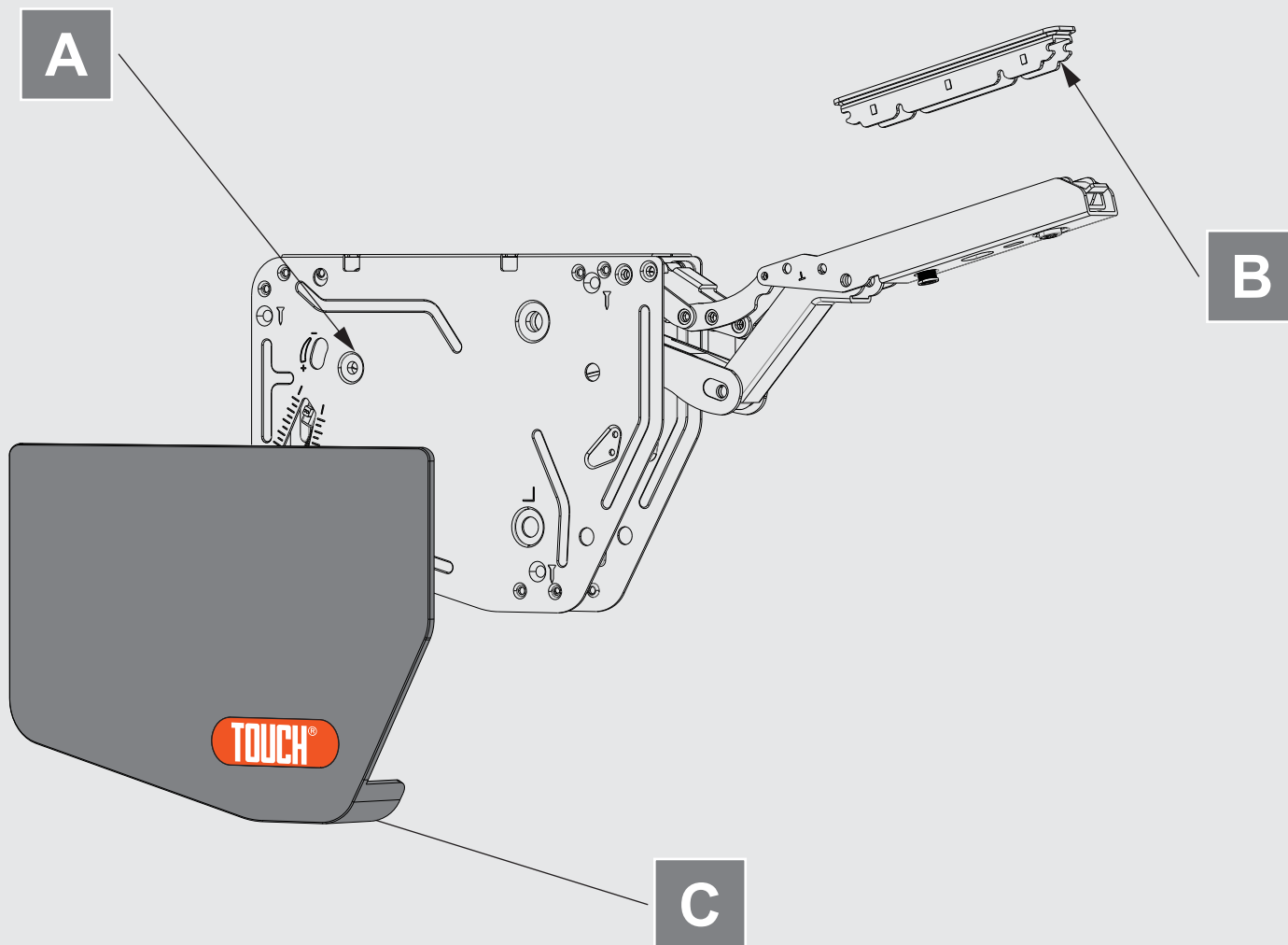
# FREE STOP PUSH-OPEN LIFT-UP DOOR SYSTEM





# TCH-311011 023.T INSTALLATION INSTRUCTIONS

## Included Components

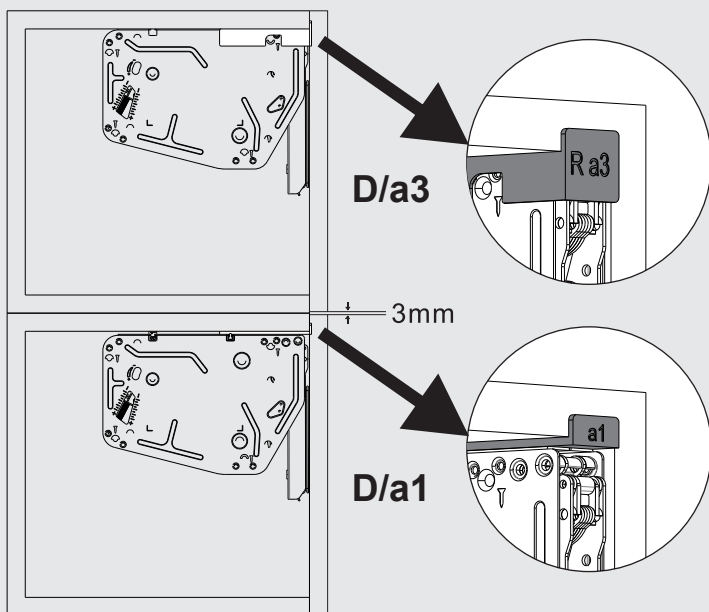




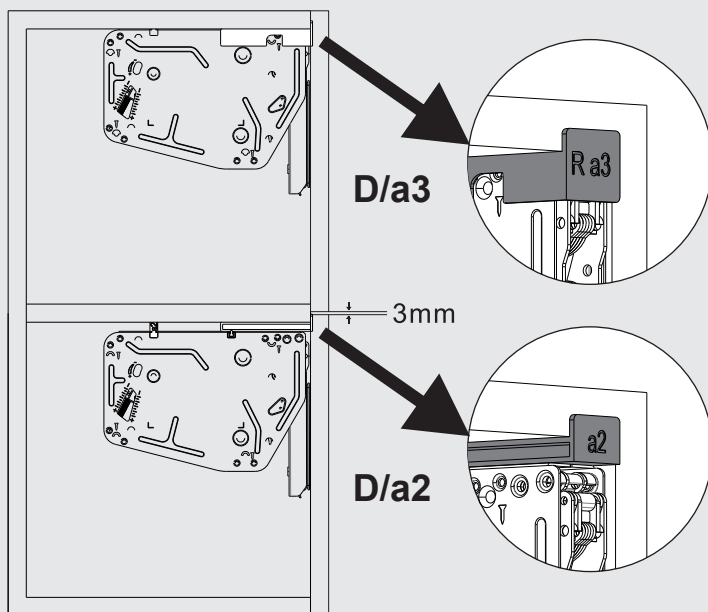
# TCH-311011 023.T INSTALLATION INSTRUCTIONS

## Applications

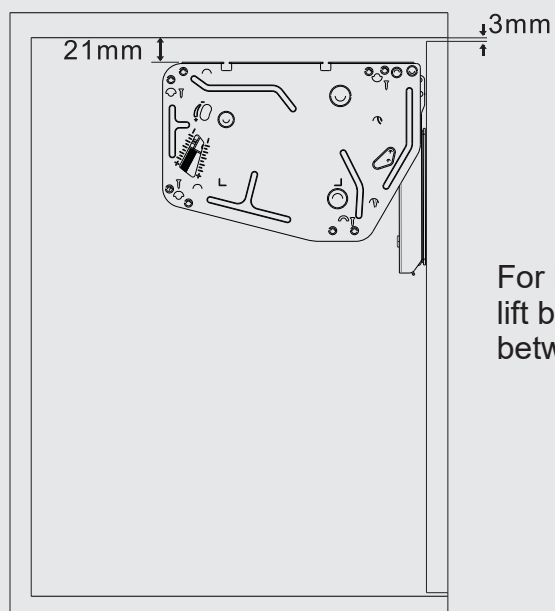
### Stacked cabinets



### Cabinet with a partition



### Inset application



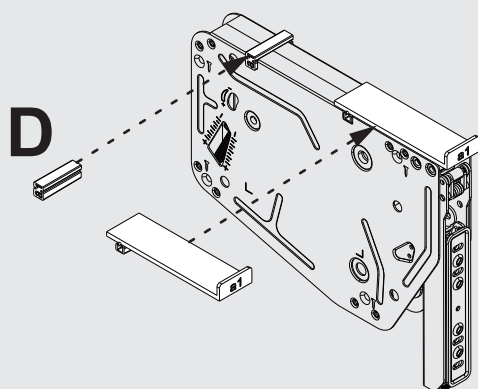
For inset applications, lower the lift by 21 mm to avoid interference between the door and the cabinet.



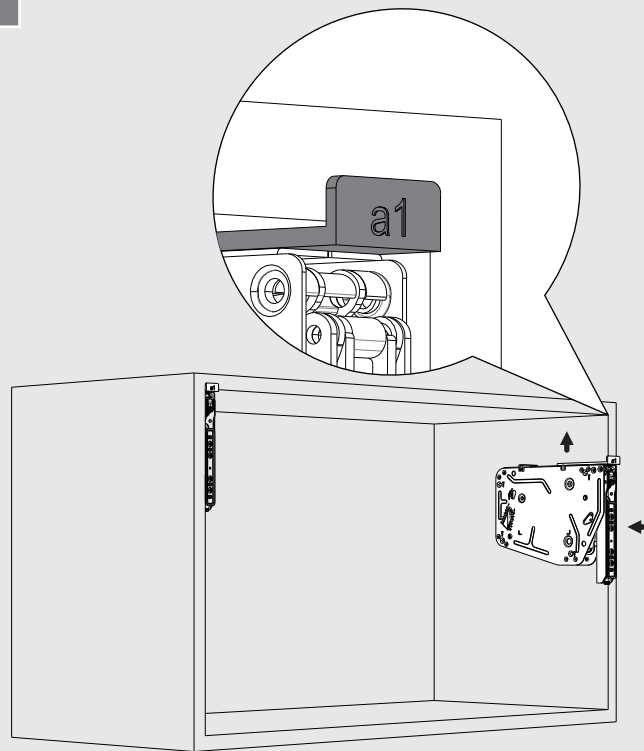
# TCH-311011 023.T INSTALLATION INSTRUCTIONS

## Installation Guide

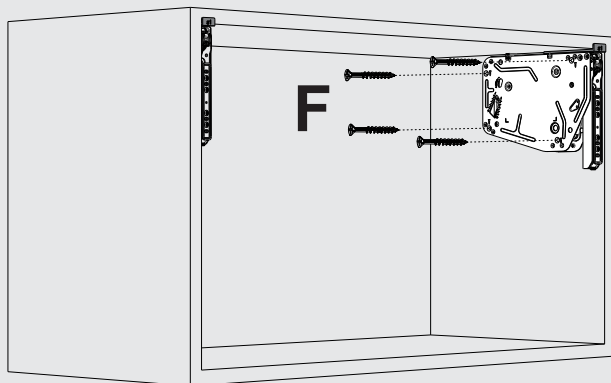
1



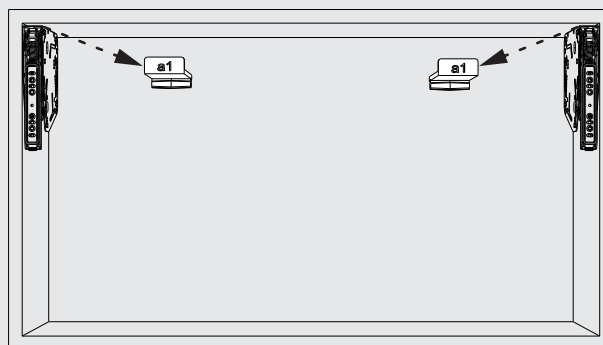
2



3



4

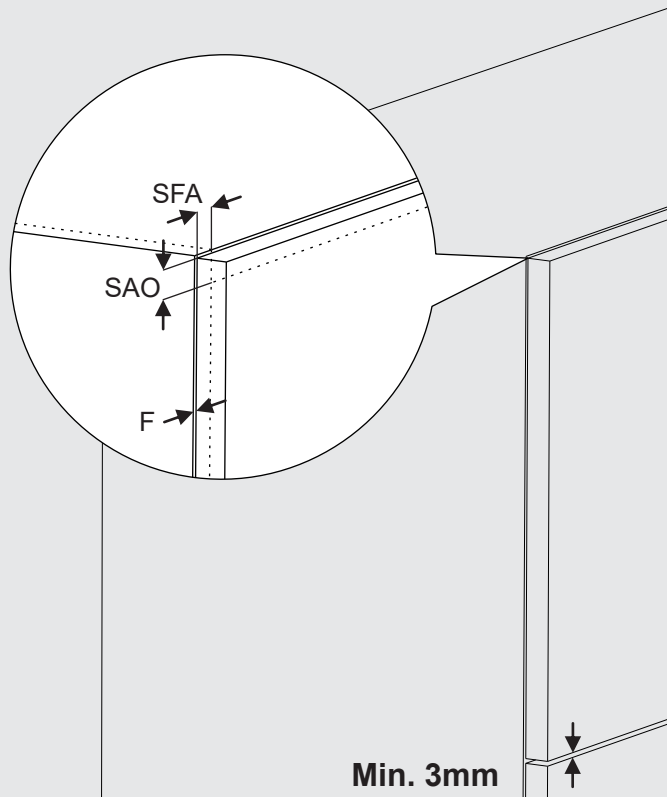




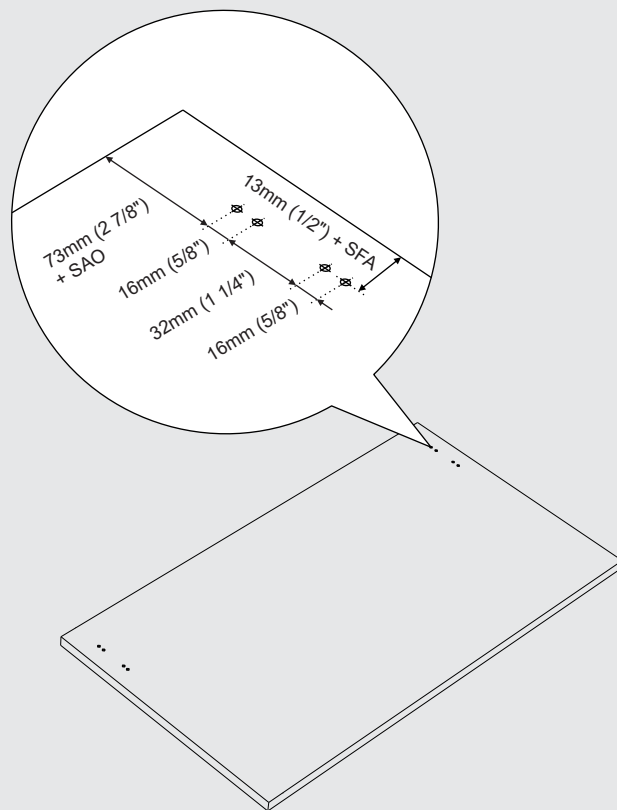
# TCH-311011 023.T INSTALLATION INSTRUCTIONS

## Installation Guide

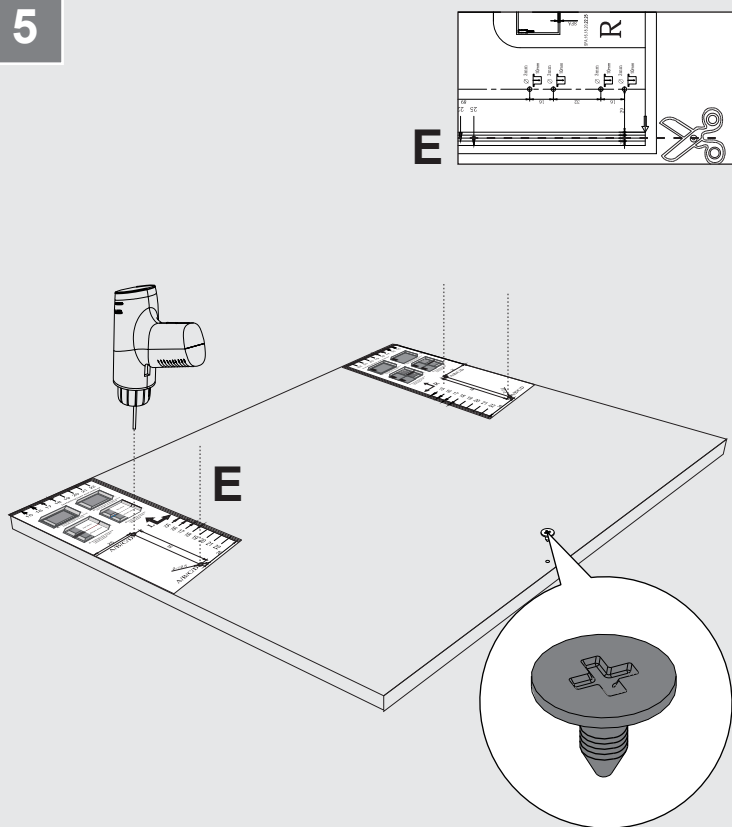
i



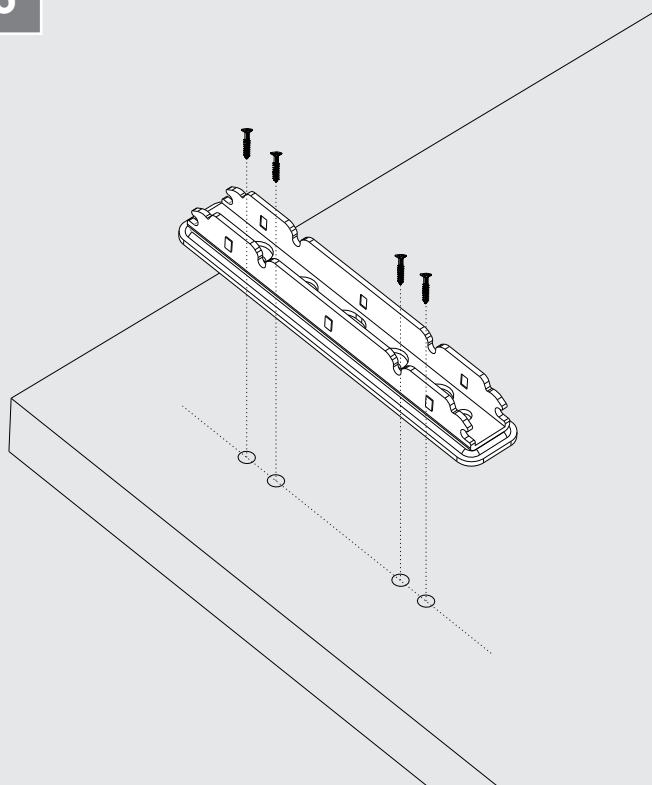
i



5



6

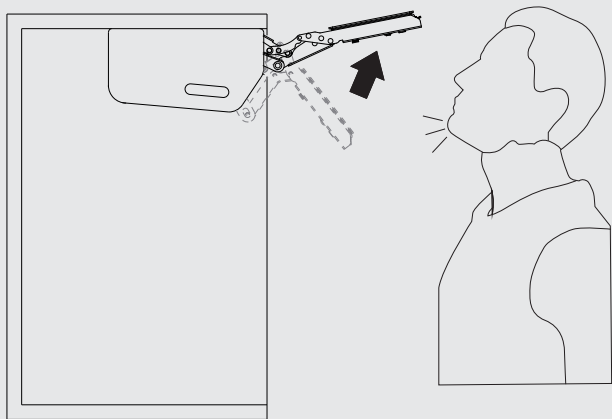




**TCH-311011 023.T**  
**INSTALLATION INSTRUCTIONS**

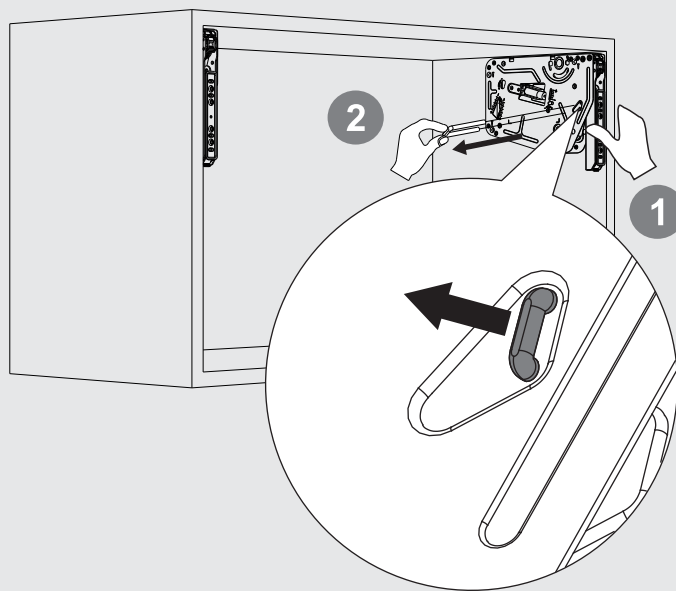
**Installation Guide**

**! WARNING**

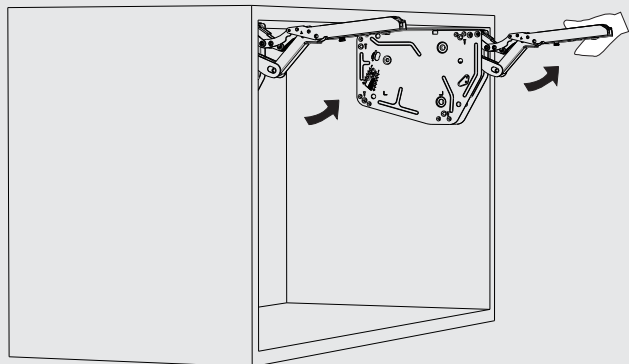


Use care when pulling out the lever. The lever may spring upward unexpectedly, potentially causing injury or damaging the lift system.!

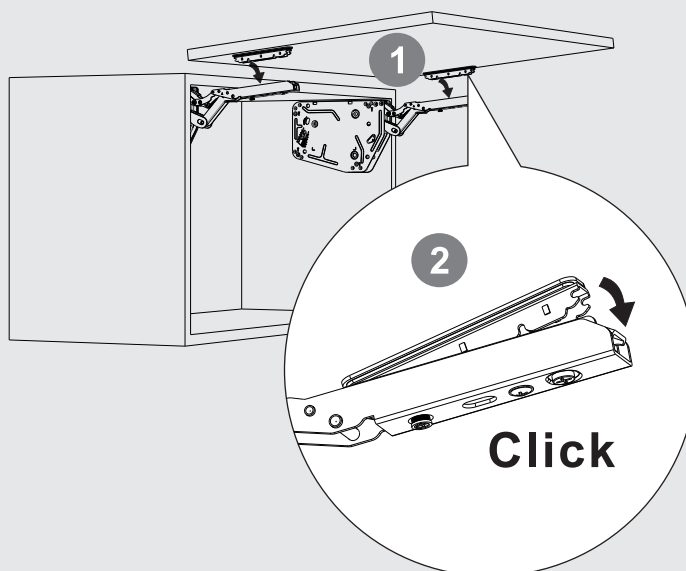
**7**



**8**



**9**

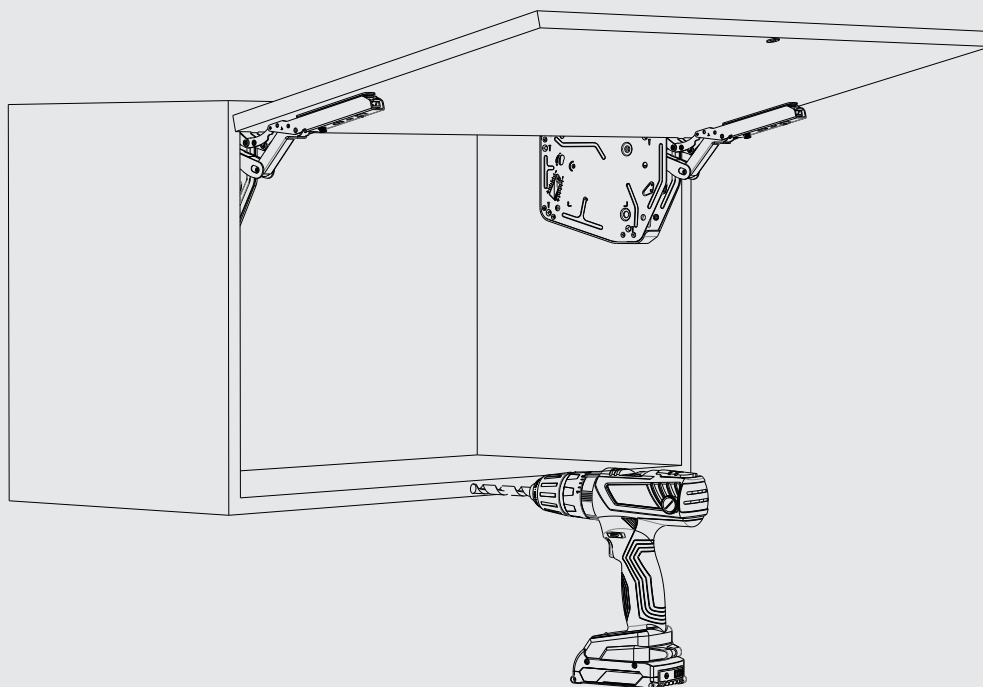




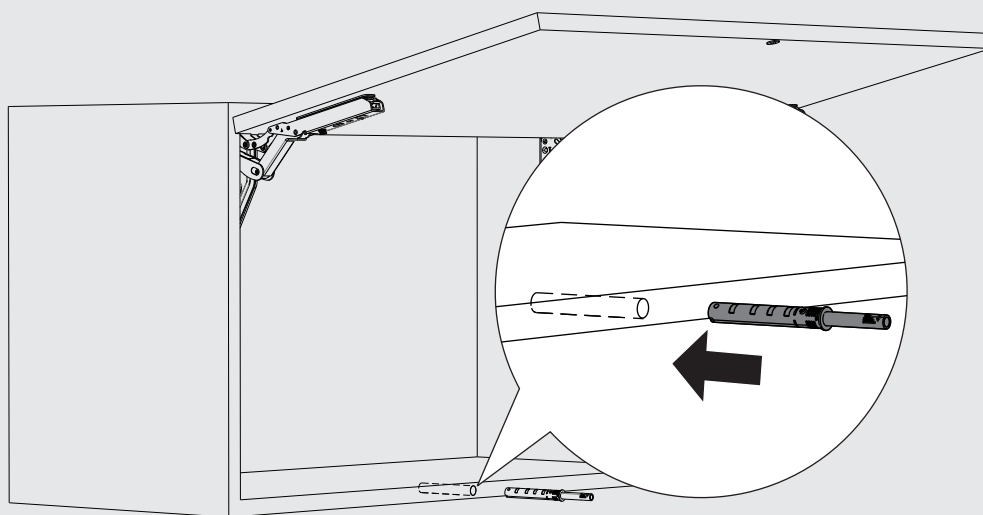
**TCH-311011 023.T**  
**INSTALLATION INSTRUCTIONS**

**Installation Guide**

**10**



**11**



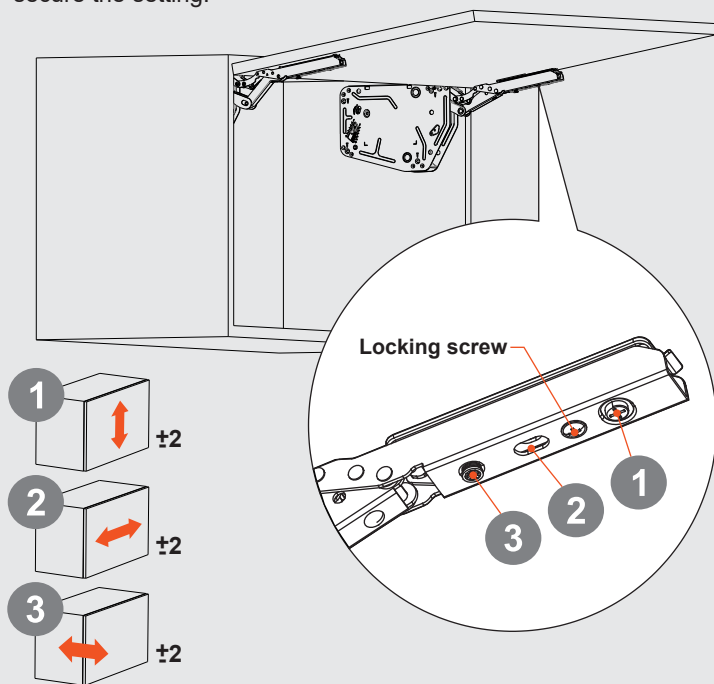


## TCH-311011 023.T INSTALLATION INSTRUCTIONS

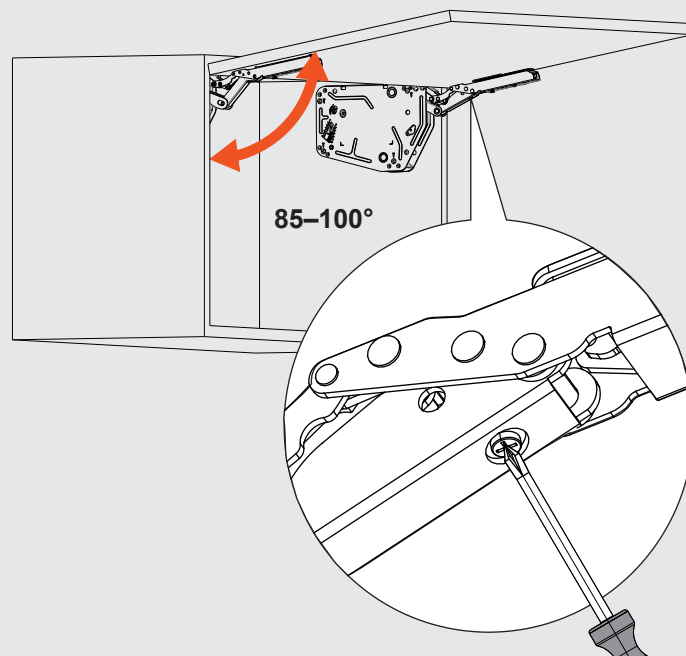
### Adjustment Instructions

#### Front Panel Alignment Adjustment.

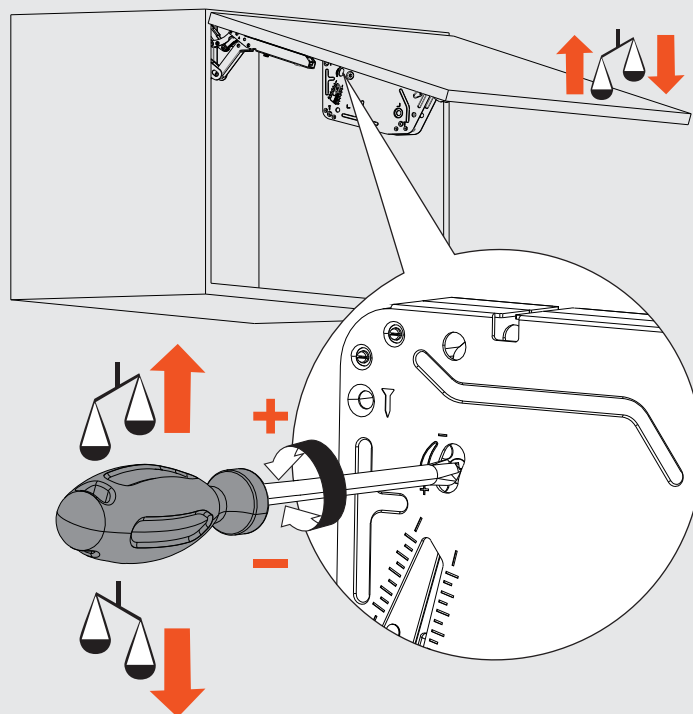
Note: Loosen the locking screw before making any adjustments. Once the adjustment is complete, re-tighten the screw to secure the setting.



#### Adjusting door opening range.



#### Lift mechanism force adjustment.





**TCH-311011 023.T**  
**INSTALLATION INSTRUCTIONS**

**End Cap Installation**

**12**

